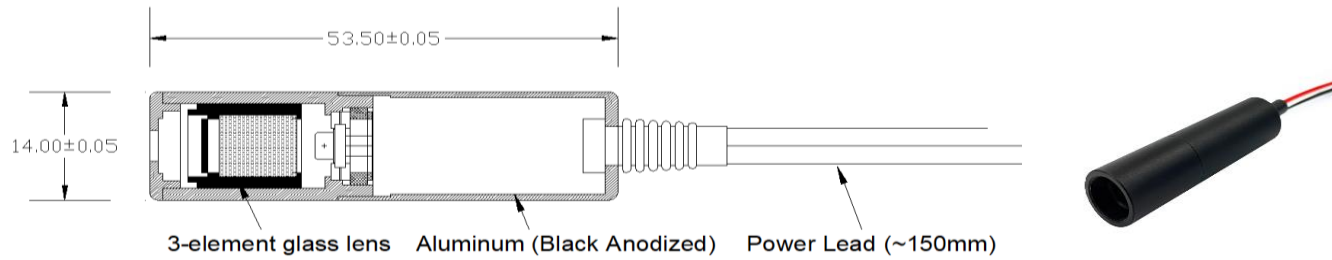


# DIODE LASER MODULE

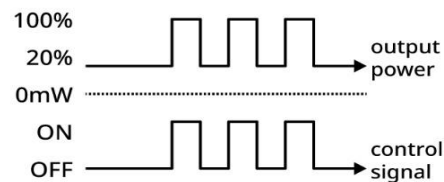
## M2LA serial - External TTL Modulation Available



### Feature -

- Low operating power consumption
- Polarity reverse protected
- High temperature operation is optional
- Focus adjustable by user
- Saving cost diode (T3 type) is available

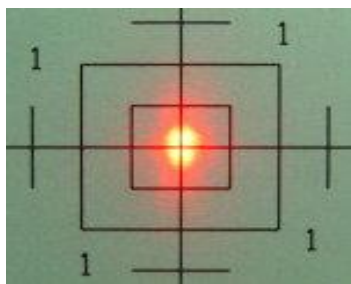
- Case Material : Black Anodized (Aluminum)
- Operation Voltage : 5V/12V



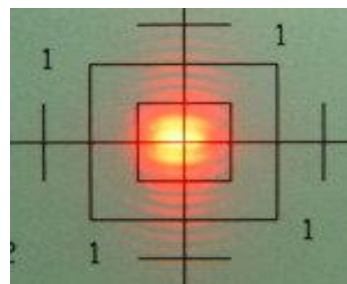
### General Specification -

Modulation Frequency	CW to 100 KHz
Modulation Level	100%(signal on) & 20%(off) of optic power
Max. Optical output Power	~ 70% of max. diode power (w/o front cover) ~ 50% of max. diode power (w/ front cover)
Optical output power	Within range +10 to -10% of customer assigned power
Wavelength	See available laser diode reference
Diode Power	See available laser diode reference
Operation Voltage	5V/12V
Operation Temperature	-10 °C ~ 40°C
Diode Power	See available laser diode reference
Beam Diameter	See available laser diode reference
Spot Size	7mm (w/o front cover ), 4mm (w/ front cover)
Beam Divergence	<0.8mrd
Bore Sighting	<15mrd
Operating Current at 25°C	Refer to laser diode
Collimating lens	3-element glass lens
Case Material	Black Anodized (Aluminum)
MTTF (Mean Time To Failure)	10000 hrs ( for standard type), 3000 hrs ( for T3 type)

Spot size at 3 meter (W/C) (unit : cm)



Spot size at 10 meter (W/C) (unit : cm)



# Available laser diodes -

	5mW	7mW	10mW	20mW	30mW	40mW	50mW	90mW	100mW up
405nm	●		●	●			●	●	●
455nm							●	●	●
488nm							●	●	
505nm					●				
515nm			●	●	●		●		●
635nm	●	●	●	●	●				●
650nm	●	●	●	●	●				●
660nm						●			●
670nm		●	●						
680nm					●				
780nm	●		●	●			●	●	●
808nm							●		●
830nm					●	●			●
850nm	●				●		●	●	●
940nm									●
980nm							●	●	●

MTTF > 10,000Hrs